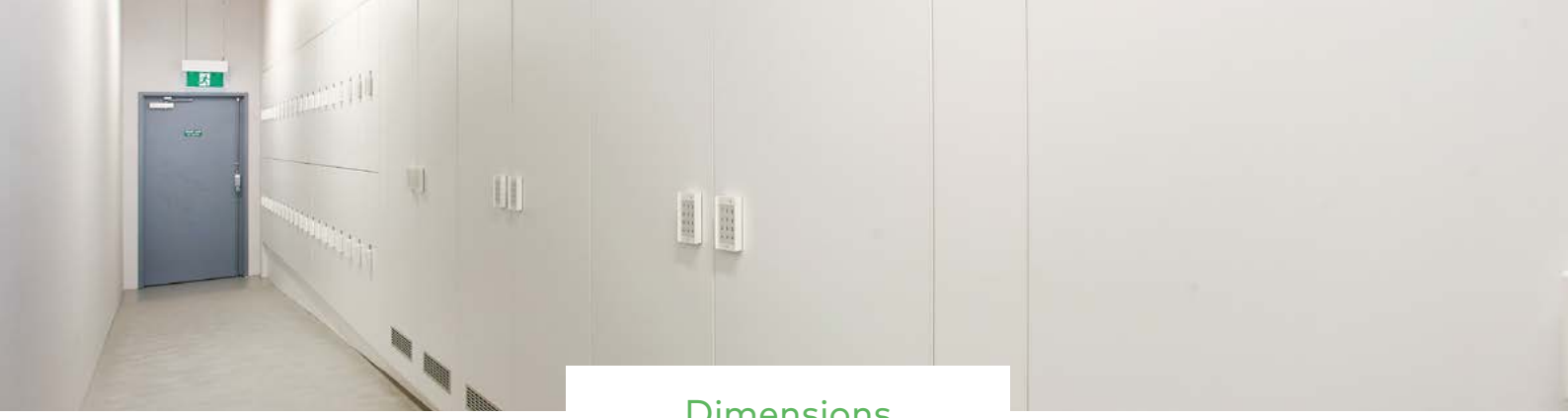


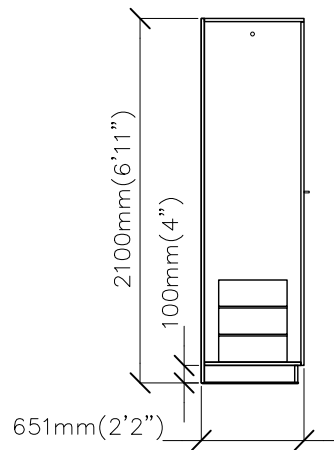
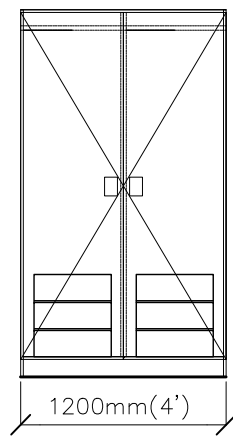
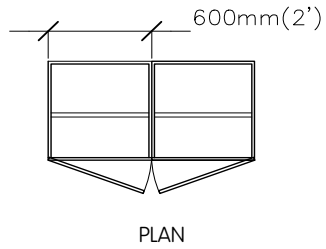


For when clothes get soggy

These stations let runners & cyclists hang their gear in a dedicated space which keeps the facility tidy, functional and odour free. The mechanically ventilated unit is more space efficient and cost effective than a drying room.



Dimensions



Features

- Vented 16mm HMR board white unit carcass
- Waterproof ply with black vinyl finish unit base
- 16mm MR MDF Lamiwood finished unit door with extensive colour range (optional)
- Shoe store
- Clothes hanging hook
- Adjustable clothes hanging rail
- Hafale storage baskets

Specification

Dimensions	600mm (2') wide 651mm (2'2") deep
Min. Ceiling	2100mm (6'11")
Lead Time	6 weeks

*The top cut-out and installation of connection services are excluded in this product package

