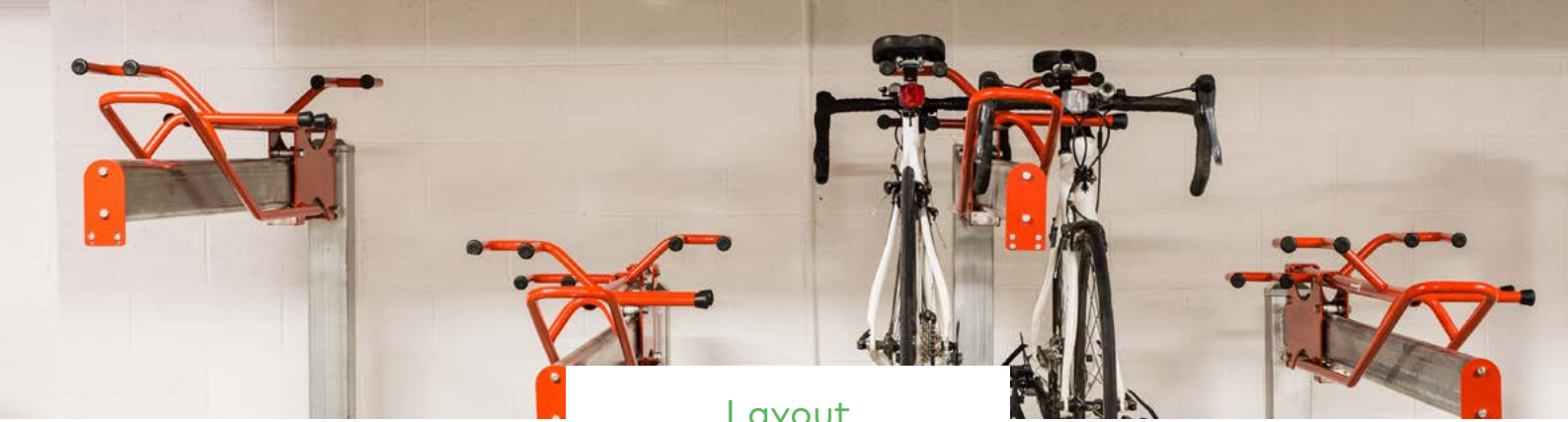


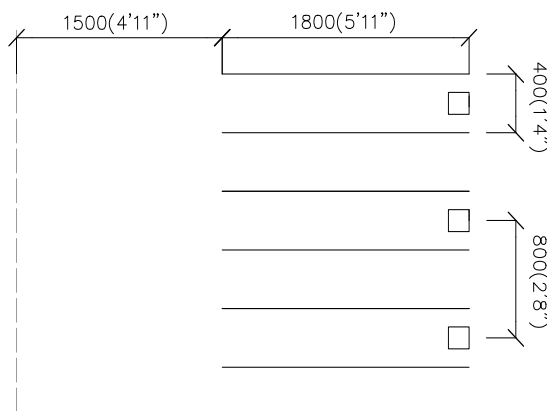
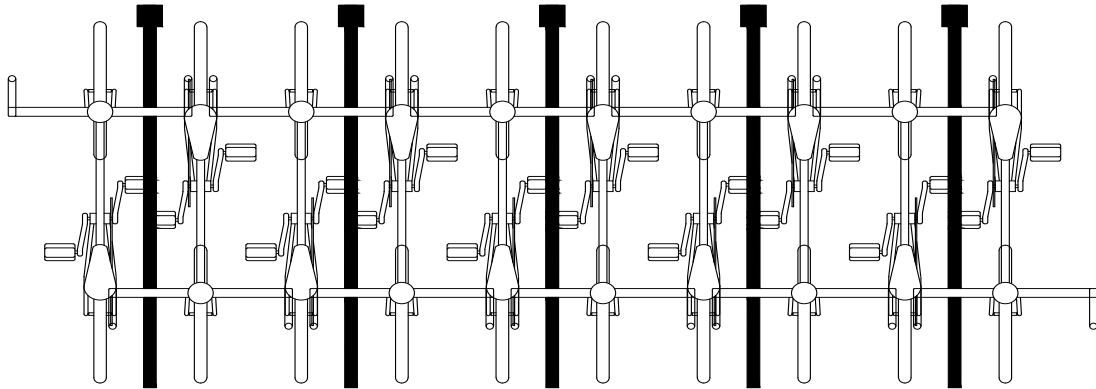


## Make use of low ceiling areas

The Track uses a patented combination of nose to tail holding, dual staggering and a rolling mechanism. These key features dynamically change the space is utilized and allows users to load & lock whilst in the circulation aisle.



Layout



## Features

- Mild Steel
- Cold galvanised rail
- Powdercoated carriage  
(min qty for custom colour: 20)

## Specification

Capacity	2 bikes
Min. Ceiling	1700mm (5'7")
Centre Spacing	(see dimensions)
Aisle Width	1500mm (4'11")
Lead Time	6 weeks
AU. Patent No.	2015202045
Int'l Patent No.	PCT/AU2016/050289

