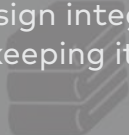
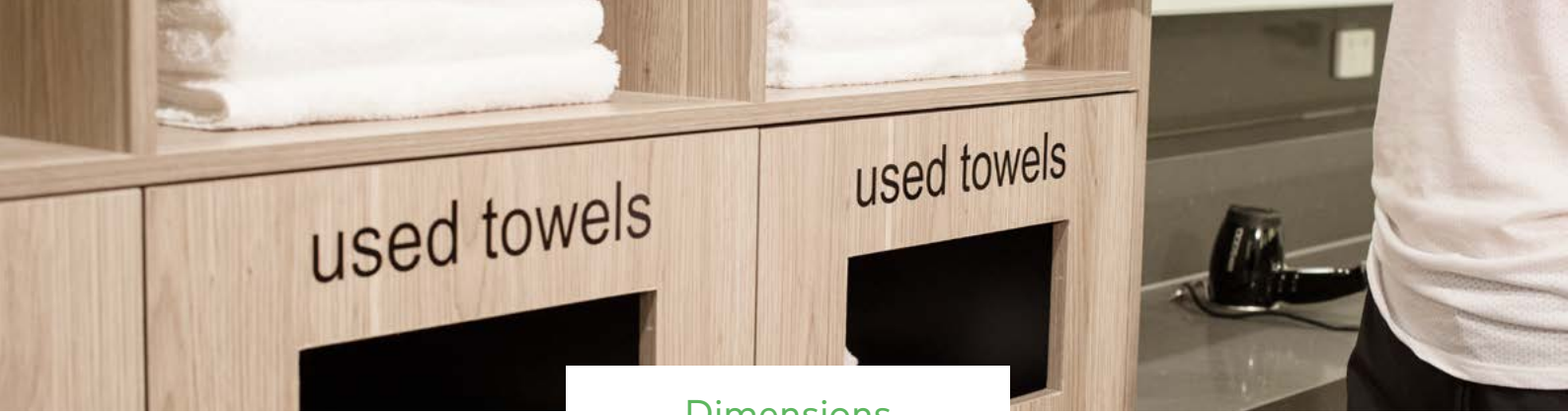




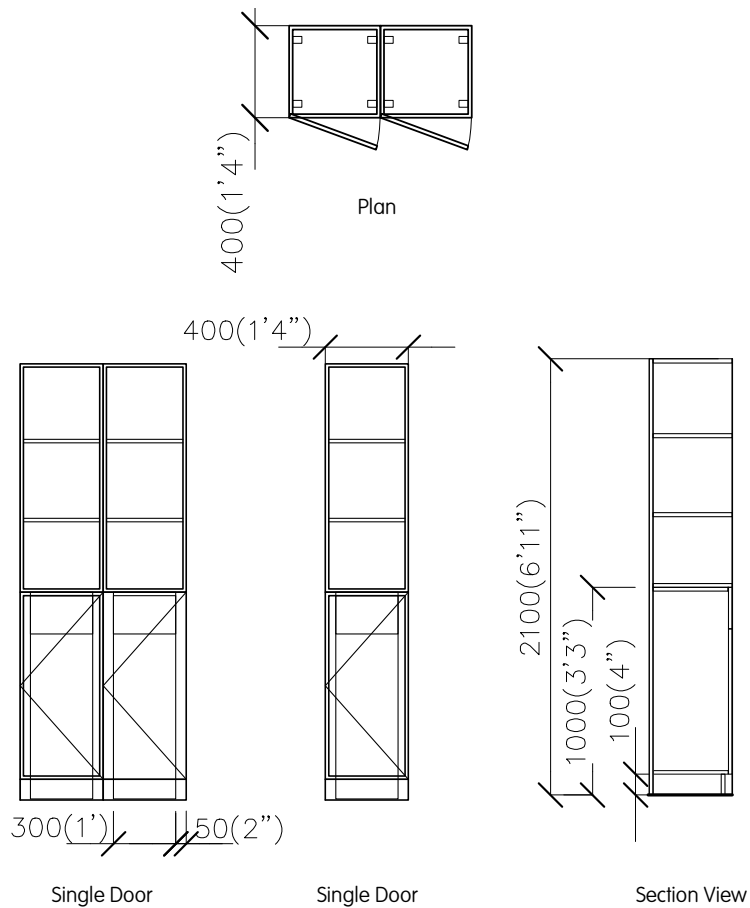
Wet towels in lockers? No thanks!

That's why towel services in end-of-trip facilities are a must-have. This unit's slim design integrates seamlessly with any change room, keeping it tidy and smelling fresh. .





Dimensions



Features

- Single Door: 18 Towels
- Double Door: 36 Towels
- Waterproof ply with black vinyl finish unit base
- 16mm MR MDF Lamiwood finished unit carcass with extensive door colour range (optional)
- Return cut out - black ABS edging
- Decals at towel return points
- Storage hooks for towel collection bags

Specification

Single Door Dimensions	400mm (1'4") wide 400mm (1'4") deep
Double Door Dimensions	400mm (1'4") wide 400mm (1'4") deep
Min. Ceiling	2100mm (6'11")
Lead Time	6 weeks

